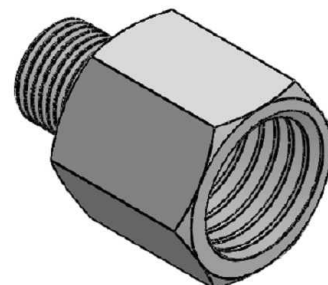
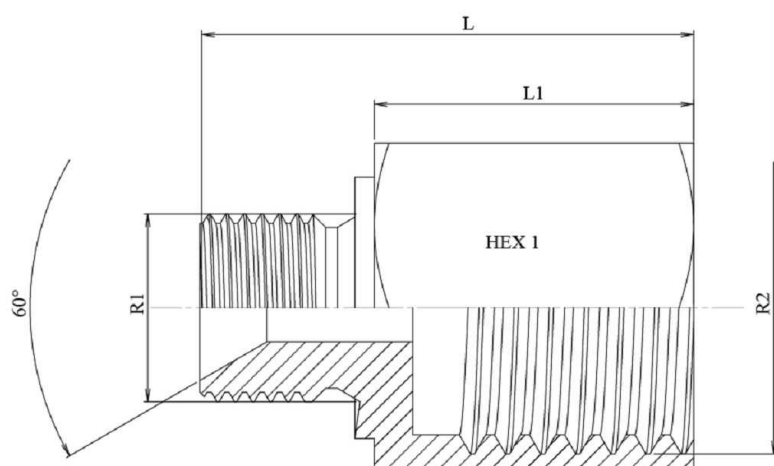


Adaptadores BSP

Uniones rectas macho-hembra

## Reductor macho BSP 60° - hembra fija BSP

Acero Inoxidable AISI 316-L



Artículo	R1	R2	L	L1	HEX 1	ØC
<b>Z10600204</b>	1/8" BSP	1/4" BSP	30	21	19	3,5
<b>Z10600206</b>	1/8" BSP	3/8" BSP	26	17	22	3,5
<b>Z10600402</b>	1/4" BSP	1/8" BSP	31	18	17	6
<b>Z10600406</b>	1/4" BSP	3/8" BSP	31	18	22	6
<b>Z10600408</b>	1/4" BSP	1/2" BSP	38	25	27	6
<b>Z10600604</b>	3/8" BSP	1/4" BSP	35	21	22	8
<b>Z10600608</b>	3/8" BSP	1/2" BSP	39	25	27	8
<b>Z10600804</b>	1/2" BSP	1/4" BSP	38,5	21	27	11
<b>Z10600806</b>	1/2" BSP	3/8" BSP	39,5	22	27	11
<b>Z10600812</b>	1/2" BSP	3/4" BSP	44	26,5	32	11
<b>Z10600816</b>	1/2" BSP	1" BSP	45,5	28,5	41	11
<b>Z10601206</b>	3/4" BSP	3/8" BSP	35,5	17	32	15
<b>Z10601208</b>	3/4" BSP	1/2" BSP	40,5	22	32	16
<b>Z10601216</b>	3/4" BSP	1" BSP	47	28,5	41	16
<b>Z10601612</b>	1" BSP	3/4" BSP	48	26,5	41	22
<b>Z10601620</b>	1" BSP	1"1/4" BSP	53,5	32	50	22
<b>Z10601624</b>	1" BSP	1"1/2" BSP	59,5	40	55	22,2
<b>Z10602016</b>	1"1/4" BSP	1" BSP	53,5	28,5	50	30
<b>Z10602420</b>	1"1/2" BSP	1"1/4" BSP	59	32	55	33
<b>Z10602432</b>	1"1/2" BSP	2" BSP	68	40	70	33
<b>Z10603224</b>	2" BSP	1"1/2" BSP	68	40	70	46